



TRANSPORTATION CABINET

Frankfort, Kentucky 40622
www.transportation.ky.gov/

Steven L. Beshear
Governor

Michael W. Hancock, P.E.
Secretary

April 20, 2011

CALL NO. 104
CONTRACT ID NO. 111013
ADDENDUM # 2

Subject: Scott County, STPR 4601 (030)
Letting April 29, 2011

- (1) Revised - Plans - Sheets #1 & #2, & G-2
- (2) Revised - Bid Items - Pages 241-246 of 246

Proposal revisions are available at <http://transportation.ky.gov/contract/>.
Plan revisions are available at <http://www.lynnimaging.com/kytransportation/>.

If you have any questions, please contact us at 502-564-3500.

Sincerely,

A handwritten signature in blue ink that reads "Ryan Griffith".

Ryan Griffith
Director
Division of Construction Procurement

RG:ks
Enclosures

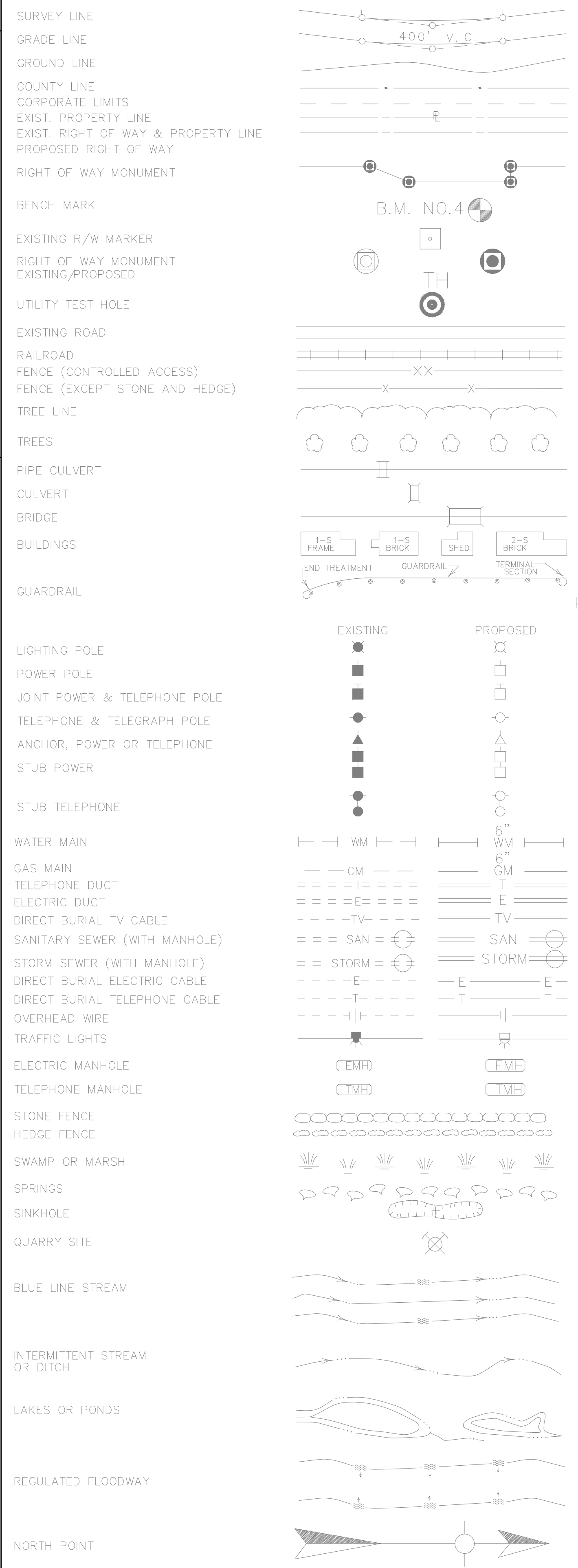


An Equal Opportunity Employer M/F/D

REVISD 4-20-11

REVISION NO.

CONVENTIONAL SIGNS

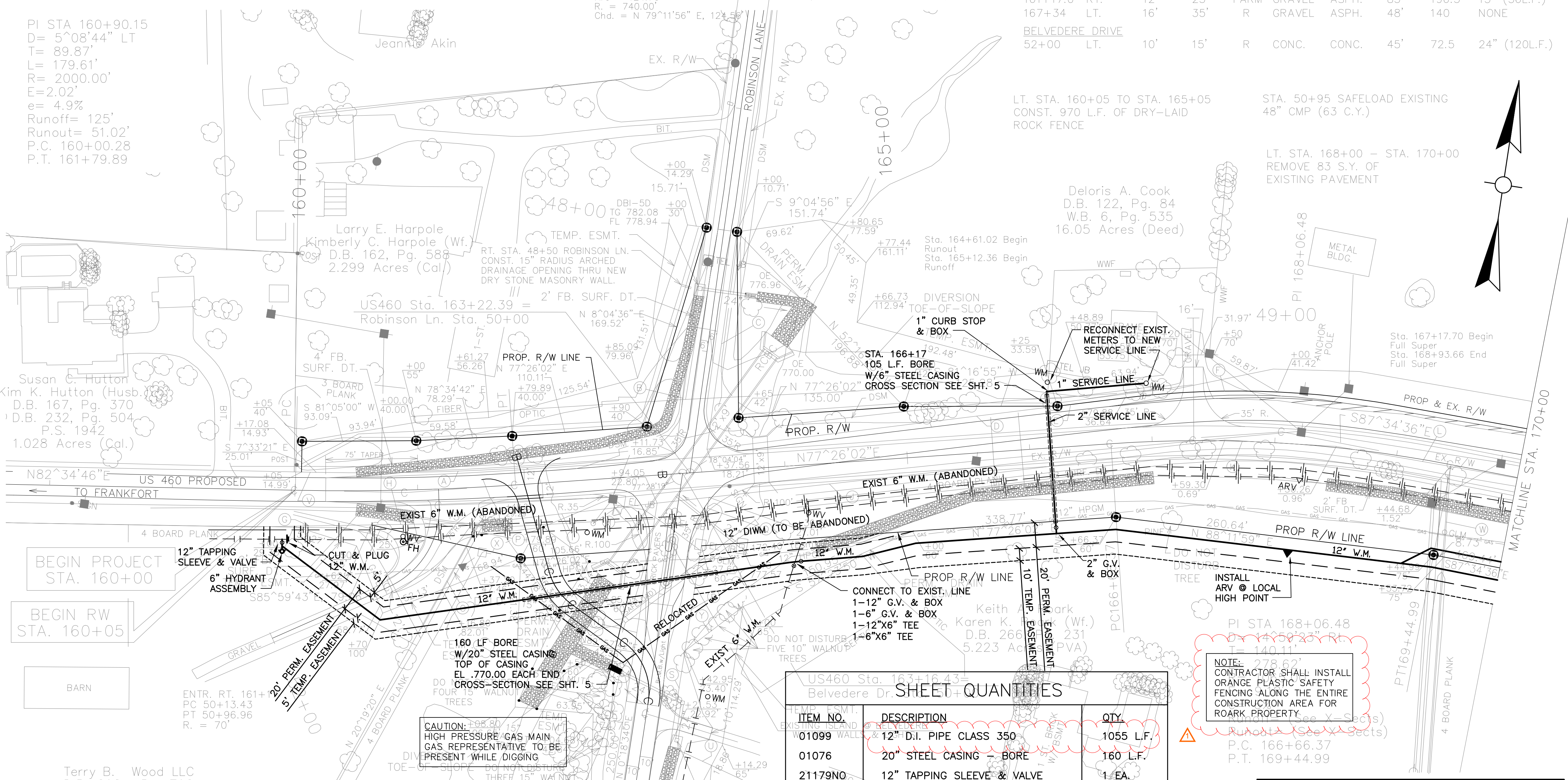


DITCH CONST. NOTES - LT.

MAINLINE STATIONS	SIZE/SHAPE	LINING	QUANTITY	L	D	W	I
160+50 to 163+00	4' F.B. SURF. DT.	CL. II	191 TONS	250'	1'	11'	1.25'
BELVEDERE DRIVE STATIONS	4' F.B. SURF. DT.	CL. II	75 TONS	90'	1'	12'	1.25'

PI STA 160+90.15
 D= 5°08'44" LT
 T= 89.87'
 L= 179.61'
 R= 2000.00'
 E= 2.02'
 e= 4.9%
 Runoff= 125'
 Runout= 51.02'
 P.C. 160+00.28
 P.T. 161+79.89

STA.	LT./RT.	WIDTH	RADIUS	TYPE	EXIST. SURF.	NEW SURF.	LENGTH	AREA (S.Y.)	PIPE
161+17.0	RT.	12'	25'	FARM	GRAVEL	ASPH.	85'	196.5	15" (56L.F.)
167+34	LT.	16'	35'	R	GRAVEL	ASPH.	48'	140	NONE
BELVEDERE DRIVE	LT.	10'	15'	R	CONC.	CONC.	45'	72.5	24" (120L.F.)



SHEET QUANTITIES

ITEM NO.	DESCRIPTION	QTY.
01099	12" D.I. PIPE CLASS 350	1055 L.F.
01076	20" STEEL CASING - BORE	160 L.F.
21179NO	12" TAPPING SLEEVE & VALVE	1 EA.
22874NN	12" GATE VALVE & BOX	1 EA.
03526	6" GATE VALVE & BOX	1 EA.
03522	2" GATE VALVE & BOX	1 EA.
22082NN	2" AIR RELEASE VALVE	1 EA.
03460	CONNECTION TO EXIST. LINE	1 EA.
03381	2" PVC CLASS 200	160 L.F.
20156EC	6" HYDRANT ASSEMBLY	1 EA.
03438	RECONNECT EXIST. METERS	2 EA.
23757EC	24" CURB STOP & BOX	1 EA.
21701EN	1" SERVICE LINE	200 L.F.
01063	6" STEEL CASING - BORE	105 L.F.
24128EC	ORANGE PLASTIC SAFETY FENCING	900 L.F.

WARNING

THE CONTRACTOR IS ADVISED TO EXERCISE CAUTION WITH CONSTRUCTION OPERATIONS IN AREAS WHERE PLANS INDICATE THE PRESENCE OF A GAS LINE, OR OTHER UTILITY LINES, CARRYING HAZARDOUS MATERIAL.

BEFORE YOU DIG

CALL 1-800-752-6007 TOLL FREE A MINIMUM OF TWO AND NO MORE THAN TEN BUSINESS DAYS PRIOR TO EXCAVATION FOR INFORMATION ON THE LOCATION OF EXISTING UNDERGROUND UTILITIES WHICH SUBSCRIBE TO THE BEFORE-U-DIG (BUD) SERVICE. COORDINATE EXCAVATION WITH ALL UTILITY OWNERS, INCLUDING THOSE WHO DO NOT SUBSCRIBE TO BUD. SHOW ALL UTILITIES AND A CONTACT PERSON FOR EACH COMPANY ON SHEET NO. 2g OF THE PLANS.

WATER MAIN PLANS

SCALE: 1" = 50'

COMMONWEALTH OF KENTUCKY
DEPARTMENT OF HIGHWAYS
COUNTY OF
SCOTT

PROJECT: FD52 105 0460 006-007
STPR 460-1.25

US 460
STA. 158+00 TO STA. 170+00

PREPARED BY _____ DATE _____
 CHECKED BY _____ DATE _____
 APPROVED BY _____ DATE _____

DITCH CONST. NOTES - LT.

ENTR. RT. 175+91.12 STATIONS	SIZE/SHAPE	LINING	QUANTITY	L	D	W	I
50+60 to 51+90	SPEC. DT.	ECB	130 S.Y.	130'	1'	9'	---

DITCH CONST. NOTES - RT.

MAINLINE STATIONS	SIZE/SHAPE	LINING	QUANTITY	L	D	W	I
170+00 to 174+30	2' F.B. SURF. DT.	CL. II	269 TONS	430'	1'	9'	1.25'
174+66 to 175+20	4' F.B. SURF. DT.	CL. III	90 TONS	67'	1'	12'	2'
175+20 to 175+55	4' F.B. SURF. DT.	CL. III	50 TONS	37'	1'	12'	2'
176+28 to 179+00	SPEC. DT.	ECB	280 S.Y.	280'	2'	9'	---
179+00 to 184+50	See X-Sections	SR	N/A	560'	---	---	---
184+50 to 185+00	See X-Sections	SR	N/A	50'	---	---	---

APPROACH ENTRANCES

STA.	LT./RT.	WIDTH	RADIUS	TYPE	EXIST SURF.	NEW SURF.	LENGTH	AREA (S.Y.)	PIPE
174+56	RT.	10'	35'	R	ASPH.	ASPH.	58'	126.5	24" (40L.F.)
175+91.12	RT.	10'	35'	R	ASPH.	ASPH.	178'	253	24" (76L.F.)

- A - N 87°35'24" W, 110.44'
- B - S 88°46'57" E, 81.56'
- C - N 86°43'01" E, 49.80'
- D - N 79°40'39" E, 52.21'
- E - N 73°09'46" E, 52.35'
- F - N 69°36'08" E, 58.95'
- G - N 66°44'44" E, 36.36'
- H - S 1°32'18" W, 79.69'
- I - S 1°32'18" W, 162.37'
- J - N 3°24'12" E, 35.18'
- K - N 11°38'35" E, 44.99'

LT. STA. 174+90 TO STA. 185+00 REMOVE
1010 L.F. OF EXISTING GUARDRAIL

LT. STA. 170+00 TO STA. 185+00 REMOVE
226 S.Y. OF EXISTING PAVEMENT

LT. STA. 174+00 TO STA. 185+00
CONST. 1100L.F. OF STEEL W-BEAM
GUARDRAIL (SINGLE FACE) & 1-GR
END TR. TY. 4-A.

PI STA 186+66.02
D= 15°09'44" Lt.
T= 232.91'
L= 463.11'
R= 1750.00'
E= 15.43'
e= 5.2%
Runoff= 132.00'
Runout= 50.77'
PC 184+33.10
PT 188+96.21

PI STA 177+41.70
D= 33°18'47" Lt.
T= 318.63'
L= 619.21'
R= 1065.00'
E=46.64'
e= 6%
Runoff= 154.00'
Runout= 51.34'
PC 174+23.16
PT 180+42.37

Catherine C. Taylor
W.B. 8, Pg. 676

ERWPNT 3 23260
Anna McDowell Wells
D.B. 71, Pg. 91
D.B. 131, Pg. 91

ERWPNT 2 3148
Deloris A. Cook
D.B. 122, Pg. 84
W.B. 6, Pg. 535
16.05 Acres (Deed)

ERWPNT 1 23152
Stewart A. Smith
Tina S. Smith (Wf.)
D.B. 177, Pg. 541
30.353 Acres (Cal.)

ERWPNT 1 23151
Ann Thomas Jones War
D.B. 207, Pg. 270
P.S. 1360
43.32 Acres (Deed)

ERWPNT 2 23175
Greg Kolles
5.122 Acres (Deed)

RT. STA. 178+00 TO RT. STA. 180+50
PLAN 28 EACH - ALLEGHENY VIBURNUM
PLANT 36"-40" HEIGHT - BALLED &
BURAPPED AT 10' CENTER TO CENTER
SPACING BETWEEN THE TOP OF THE CUT
SLOPE & FENCE. A ONE GROWING SEASON
PERIOD OF ESTABLISHMENT SHALL BE
REQUIRED FROM THE CONTRACTOR.

LT. ENTR. PARCEL 12 STA. 0+75
TO STA. 1+50 CONST. 65 L.F. OF
DRY-LAID ROCK FENCE RETAINING
WALL, 44 C.Y. OF STRUCTURE
GRANULAR BACKFILL, 251 C.Y.
OF STRUCTURAL EXCAVATION
UNCLASSIFIED, AND 29 C.Y.
OF TOPSOIL FURNISHED IN PLACE
- REFER TO DETAIL SHEET 16A.

RT. STA. 178+25 TO STA. 180+63
CONST. 260 L.F. OF 4' HIGH CHAIN
LINK FENCE. - REFER TO STANDARD
DRAWING NO. RFC-001-07.

WARNING

THE CONTRACTOR IS ADVISED TO EXERCISE CAUTION
WITH CONSTRUCTION OPERATIONS IN AREAS WHERE
PLANS INDICATE THE PRESENCE OF A GAS LINE, OR
OTHER UTILITY LINES, CARRYING HAZARDOUS MATERIAL.

WATER MAIN PLANS

STA 170+00 TO STA. 185+00

SCALE: 1"=50'

SHEET QUANTITIES

ITEM NO.	DESCRIPTION	QTY.
01099	12" D.I. PIPE CLASS 350	1605 L.F.
01076	20" STEEL CASING - BORE	40 L.F.
03438	RECONNECT EXIST. METERS	1 EA.
20481EC	TYPE "C" CREEK CROSSING	50 L.F.
03532	12" G.V. & BOX	1 EA.
22082NN	2" AIR RELEASE VALVE	1 EA.
23308EC	SET NEW METER & RECONNECT	1 EA.

NOTES:

- ALL PIPE THIS SHEET SHALL BE DUCTILE IRON CLASS 350.
- VERTICAL BENDS NOT SHOWN. CONTRACTOR TO INSTALL VERTICAL BENDS NECESSARY TO RETURN W.M. TO NORMAL DEPTH AFTER ALL ROAD CROSSINGS.

CAUTION: GAS MAIN CROSSING.
SEE DETAIL SHEET FOR UTILITY
CROSSING DETAIL

CAUTION: HIGH PRESSURE GAS MAIN
GAS REPRESENTATIVE TO BE
PRESENT WHILE DIGGING

NOTE:
WATER MAIN SHALL BE
INSTALLED W/12" MINIMUM
VERTICAL CLEARANCE OF
THE GAS MAIN

INSTALL
ARV @ LOCAL
HIGH POINT

NEW W.M. & DBL
CHECK ASSEMBLY

50 L.F. TYPE "C"
CREEK CROSSING

40 L.F. BORE W/20"
STEEL CASING PIPE

12" G.V.
& BOX

RECONNECT EXIST.
METER TO NEW W.M.

20' TEMP. EASEMENT

10' TEMP. EASEMENT

20' PERM. EASEMENT

10' TEMP. EASEMENT

20' PERM. EASEMENT

10' TEMP. EASEMENT

20' PERM. EASEMENT

10' TEMP. EASEMENT

20' PERM. EASEMENT

10' TEMP. EASEMENT

20' PERM. EASEMENT

10' TEMP. EASEMENT

20' PERM. EASEMENT

10' TEMP. EASEMENT

20' PERM. EASEMENT

10' TEMP. EASEMENT

20' PERM. EASEMENT

10' TEMP. EASEMENT

20' PERM. EASEMENT

10' TEMP. EASEMENT

20' PERM. EASEMENT

10' TEMP. EASEMENT

20' PERM. EASEMENT

10' TEMP. EASEMENT

20' PERM. EASEMENT

10' TEMP. EASEMENT

20' PERM. EASEMENT

10' TEMP. EASEMENT

20' PERM. EASEMENT

10' TEMP. EASEMENT

20' PERM. EASEMENT

10' TEMP. EASEMENT

20' PERM. EASEMENT

10' TEMP. EASEMENT

20' PERM. EASEMENT

10' TEMP. EASEMENT

20' PERM. EASEMENT

10' TEMP. EASEMENT

20' PERM. EASEMENT

10' TEMP. EASEMENT

20' PERM. EASEMENT

10' TEMP. EASEMENT

20' PERM. EASEMENT

10' TEMP. EASEMENT

20' PERM. EASEMENT

10' TEMP. EASEMENT

20' PERM. EASEMENT

10' TEMP. EASEMENT

20' PERM. EASEMENT

10' TEMP. EASEMENT

20' PERM. EASEMENT

10' TEMP. EASEMENT

20' PERM. EASEMENT

10' TEMP. EASEMENT

20' PERM. EASEMENT

10' TEMP. EASEMENT

20' PERM. EASEMENT

10' TEMP. EASEMENT

20' PERM. EASEMENT

10' TEMP. EASEMENT

20' PERM. EASEMENT

10' TEMP. EASEMENT

20' PERM. EASEMENT

10' TEMP. EASEMENT

20' PERM. EASEMENT

10' TEMP. EASEMENT

20' PERM. EASEMENT

10' TEMP. EASEMENT

20' PERM. EASEMENT

10' TEMP. EASEMENT

20' PERM. EASEMENT

10' TEMP. EASEMENT

20' PERM. EASEMENT

10' TEMP. EASEMENT

20' PERM. EASEMENT

10' TEMP. EASEMENT

20' PERM. EASEMENT

10' TEMP. EASEMENT

20' PERM. EASEMENT

10' TEMP. EASEMENT

20' PERM. EASEMENT

10' TEMP. EASEMENT

20' PERM. EASEMENT

10' TEMP. EASEMENT

20' PERM. EASEMENT

10' TEMP. EASEMENT

20' PERM. EASEMENT

10' TEMP. EASEMENT

20' PERM. EASEMENT

10' TEMP. EASEMENT

20' PERM. EASEMENT

10' TEMP. EASEMENT

20' PERM. EASEMENT

10' TEMP. EASEMENT

20' PERM. EASEMENT

10' TEMP. EASEMENT

20' PERM. EASEMENT

10' TEMP. EASEMENT

20' PERM. EASEMENT

10' TEMP. EASEMENT

20' PERM. EASEMENT

10' TEMP. EASEMENT

20' PERM. EASEMENT

10' TEMP. EASEMENT

20' PERM. EASEMENT

10' TEMP. EASEMENT

20' PERM. EASEMENT

10' TEMP. EASEMENT

20' PERM. EASEMENT

10' TEMP. EASEMENT

20' PERM. EASEMENT

10' TEMP. EASEMENT

20' PERM. EASEMENT

10' TEMP. EASEMENT

20' PERM. EASEMENT

10' TEMP. EASEMENT

20' PERM. EASEMENT

10' TEMP. EASEMENT

20' PERM. EASEMENT

10' TEMP. EASEMENT

20' PERM. EASEMENT

10' TEMP. EASEMENT

20' PERM. EASEMENT

10' TEMP. EASEMENT

20' PERM. EASEMENT

10' TEMP. EASEMENT

20' PERM. EASEMENT

10' TEMP. EASEMENT

20' PERM. EASEMENT

10' TEMP. EASEMENT

20' PERM. EASEMENT

10' TEMP. EASEMENT

20' PERM. EASEMENT

10' TEMP. EASEMENT

20' PERM. EASEMENT

10' TEMP. EASEMENT

20' PERM. EASEMENT

10' TEMP. EASEMENT

20' PERM. EASEMENT

10' TEMP. EASEMENT

20' PERM. EASEMENT

10' TEMP. EASEMENT

20' PERM. EASEMENT

10' TEMP. EASEMENT

20' PERM. EASEMENT

10' TEMP. EASEMENT

20' PERM. EASEMENT

10' TEMP. EASEMENT

20' PERM. EASEMENT

10' TEMP. EASEMENT

20' PERM. EASEMENT

10' TEMP. EASEMENT

20' PERM. EASEMENT

10' TEMP. EASEMENT

20' PERM. EASEMENT

10' TEMP. EASEMENT

20' PERM. EASEMENT

10' TEMP. EASEMENT

20' PERM. EASEMENT

10' TEMP. EASEMENT

20' PERM. EASEMENT

10' TEMP. EASEMENT

20' PERM. EASEMENT

10' TEMP. EASEMENT

20' PERM. EASEMENT

10' TEMP. EASEMENT

PREPARED BY _____ DATE _____
 CHECKED BY _____ DATE _____
 APPROVED BY _____ DATE _____

DITCH CONST. NOTES - LT.

ENTR. RT.	STATIONS	SIZE/SHAPE	LINING	QUANTITY	L	D	W	I
50+60	to 51+90	SPEC. DT.	ECB	130 S.Y.	130'	1'	9'	---

DITCH CONST. NOTES - RT.

MAINLINE STATIONS	SIZE/SHAPE	LINING	QUANTITY	L	D	W	I
170+00 to 174+30	2' F.B. SURF. DT.	CL. II	269 TONS	430'	1'	9'	1.25'
174+66 to 175+20	4' F.B. SURF. DT.	CL. III	90 TONS	67'	1'	12'	2'
175+20 to 175+55	4' F.B. SURF. DT.	CL. III	50 TONS	37'	1'	12'	2'
176+28 to 179+00	SPEC. DT.	ECB	280 S.Y.	280'	2'	9'	---
179+00 to 184+50	See X-Sections	SR	N/A	560'	---	---	---
184+50 to 185+00	See X-Sections	SR	N/A	50'	---	---	---

APPROACH ENTRANCES

STA.	LT./RT.	WIDTH	RADIUS	TYPE	EXIST SURF.	NEW SURF.	LENGTH	AREA (S.Y.)	PIPE
174+56	RT.	10'	35'	R	ASPH.	ASPH.	58'	126.5	24" (40L.F.)
175+91.12	RT.	10'	35'	R	ASPH.	ASPH.	178'	253	24" (76L.F.)

- A - N 87°35'24" W, 110.44'
- B - S 88°46'57" E, 81.56'
- C - N 86°43'01" E, 49.80'
- D - N 79°40'39" E, 52.21'
- E - N 73°09'46" E, 52.35'
- F - N 69°36'08" E, 58.95'
- G - N 66°44'44" E, 36.36'
- H - S 1°32'18" W, 79.69'
- I - S 1°32'18" W, 162.37'
- J - N 3°24'12" E, 35.18'
- K - N 11°38'35" E, 44.99'

LT. STA. 174+90 TO STA. 185+00 REMOVE
1010 L.F. OF EXISTING GUARDRAIL

LT. STA. 170+00 TO STA. 185+00 REMOVE
226 S.Y. OF EXISTING PAVEMENT

LT. STA. 174+00 TO STA. 185+00
CONST. 1100L.F. OF STEEL W-BEAM
GUARDRAIL (SINGLE FACE) & 1-GR
END TR. TY. 4-A.

PI STA 186+66.02
D= 15°09'44" Lt.
T= 232.91'
L= 463.11'
R= 1750.00'
E= 15.43'
e= 5.2%
Runoff= 132.00'
Runout= 50.77'
PC 184+33.10
PT 188+96.21

PI STA 177+41.70
D= 33°18'47" Lt.
T= 318.63'
L= 619.21'
R= 1065.00'
E=46.64'
e= 6%
Runoff= 154.00'
Runout= 51.34'
PC 174+23.16
PT 180+42.37

Catherine C. Taylor
W.B. 8, Pg. 676

ERWPNT 3 23260
Anna McDowell Wells
D.B. 71, Pg. 91
D.B. 131, Pg. 91

ERWPNT 2 3148
Deloris A. Cook
D.B. 122, Pg. 84
W.B. 6, Pg. 535
16.05 Acres (Deed)

ERWPNT 1 23152
Stewart A. Smith
Tina S. Smith (Wf.)
D.B. 177, Pg. 541
30.353 Acres (Cal.)

ERWPNT 1 23151
Ann Thomas Jones War
D.B. 207, Pg. 270
P.S. 1360
43.32 Acres (Deed)

SHEET QUANTITIES		
ITEM NO.	DESCRIPTION	QTY.
01099	12" D.I. PIPE CLASS 350	1605 L.F.
01076	20" STEEL CASING - BORE	40 L.F.
03438	RECONNECT EXIST. METERS	1 EA.
20481EC	TYPE "C" CREEK CROSSING	50 L.F.
03532	12" G.V. & BOX	1 EA.
22082NN	2" AIR RELEASE VALVE	1 EA.
23308EC	SET NEW METER & RECONNECT	1 EA.

NOTES:

- ALL PIPE THIS SHEET SHALL BE DUCTILE IRON CLASS 350.
- VERTICAL BENDS NOT SHOWN. CONTRACTOR TO INSTALL VERTICAL BENDS NECESSARY TO RETURN W.M. TO NORMAL DEPTH AFTER ALL ROAD CROSSINGS.

CAUTION: HIGH PRESSURE GAS MAIN
GAS REPRESENTATIVE TO BE PRESENT WHILE DIGGING

NOTE:
WATER MAIN SHALL BE INSTALLED W/12" MINIMUM VERTICAL CLEARANCE OF THE GAS MAIN

RT. STA. 178+00 TO RT. STA. 180+50
PLAN/28 EACH - ALLEGHENY VIBURNUM
PLAN/36"-40" HEIGHT - BALLED &
BURAPPED AT 10' CENTER TO CENTER
SPACING BETWEEN THE TOP OF THE CUT
SLOPE & FENCE. A ONE GROWING SEASON
PERIOD OF ESTABLISHMENT SHALL BE
REQUIRED FROM THE CONTRACTOR.

LT. ENTR. PARCEL 12 STA. 0+75
TO STA. 1+50 CONST. 65 L.F. OF
DRY-LAID ROCK FENCE RETAINING
WALL, 44 C.Y. OF STRUCTURE
GRANULAR BACKFILL, 251 C.Y.
OF STRUCTURAL EXCAVATION
UNCLASSIFIED, AND 29 C.Y.
OF TOPSOIL FURNISHED IN PLACE
- REFER TO DETAIL SHEET 16A.

RT. STA. 178+25 TO STA. 180+63
CONST. 260 L.F. OF 4' HIGH CHAIN
LINK FENCE. - REFER TO STANDARD
DRAWING NO. RFC-001-07.

WARNING

THE CONTRACTOR IS ADVISED TO EXERCISE CAUTION WITH CONSTRUCTION OPERATIONS IN AREAS WHERE PLANS INDICATE THE PRESENCE OF A GAS LINE, OR OTHER UTILITY LINES, CARRYING HAZARDOUS MATERIAL.

WATER MAIN PLANS

STA 170+00 TO STA. 185+00

SCALE: 1"=50'

USER: _____
 DATE: _____
 FILE NAME: _____
 E-SHEET NAME: _____

COUNTY OF	ITEM NO.	SHEET NO.
SCOTT	7-344.00	G-2

REVISION NO.
1

ITEM CODE	ITEM DESCRIPTION	UNIT	SHEET 1	SHEET 2	SHEET 3	SHEET 4	TOTAL
03381	2-inch Water Main, PVC Pipe, Class 200 SDR 21 with all appurtenances and fittings	L.F.	160				160
03382	3-inch Water Main, PVC Pipe, Class 200 SDR 21 with all appurtenances and fittings	L.F.			80		80
01099	12-inch Water Main, Ductile Iron, Class 350 Pipe with all appurtenances and fittings	L.F.	1055	1605	1500	375	4535
20481EC	12-inch Ductile Iron, Class 350, Creek Crossing with all appurtenances and fittings	L.F.		50		90	140
03522	2-inch CI AWWA NRS Gate Valve and Valve Box, Complete in Place	EA.	1				1
03523	3-inch CI AWWA NRS Gate Valve and Valve Box, Complete in Place	EA.			1		1
03526	6-inch CI AWWA NRS Gate Valve and Valve Box, Complete in Place	EA.	1			1	2
03532	12-inch CI AWWA NRS Gate Valve and Valve Box, Complete in Place	EA.	1	1	2	1	5
20156EC	6-inch Hydrant Assembly	EA.	1		1	1	3
01063	6-inch Steel Casing Pipe Bored and Jacked	L.F.	105				105
01076	20-inch Steel Casing Pipe Bored and Jacked	L.F.	160	40	60	80	340
22082NN	2" Air Release Valve	EA.	1	1			2
03460	Connection to Existing Water Main	EA.	1		1	1	3
21179NO	Wet Tap Connection - 12" Tapping Sleeve and Valve	EA.	1			1	2
03438	Reconnect Existing Meter to New Water Main	EA.	2	1			3
23308EC	Set New Meter and Reconnect to New Water Main	EA.		1			1
23757EC	1" Curb Stop & Box	EA.	1				1
21701EN	1" Service Line	L.F.	200				200
24128EC	Orange Plastic Safety Fencing	L.F.	900				900

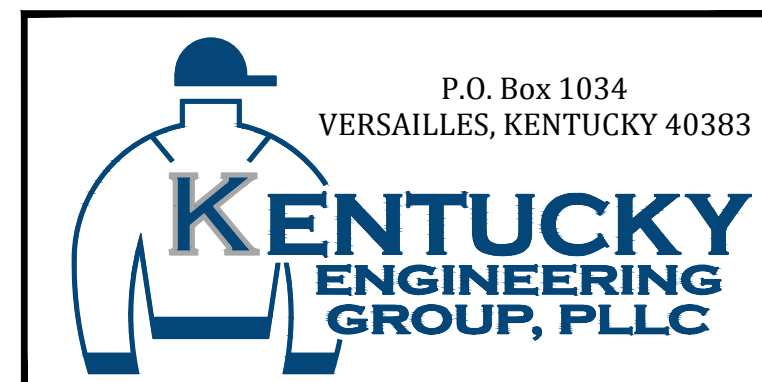
P:\PROJECTS\GMWSS\09016-US-460 WL Reloc\Drawings\DWG\09016-G02.dwg

IT IS A VIOLATION OF LAW FOR ANY PERSON TO ALTER THIS DRAWING WITHOUT WRITTEN PERMISSION FROM KENTUCKY ENGINEERING GROUP, PLLC AND ACTING UNDER THE DIRECTION OF A LICENSED ENGINEER.

THIS DRAWING WAS PREPARED AT THE SCALE INDICATED. INACCURACIES IN THE STATED SCALE MAY BE INTRODUCED WHEN DRAWINGS ARE REPRODUCED BY ANY MEANS. USE THE GRAPHIC SCALE BAR IN THE DRAWING OR TITLE BLOCK TO DETERMINE THE ACTUAL SCALE.

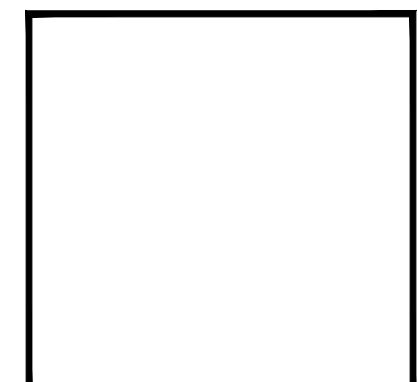
NO.	DATE	REVISIONS	BY

DATE:	DECEMBER, 2009
PROJECT MGR:	BKL
DRAWN BY:	CDS
CHECKED BY:	BKL
SCALE:	AS NOTED
2009 © Kentucky Engineering Group, PLLC	



US 460 WATERLINE RELOCATION
FOR
**GEORGETOWN MUNICIPAL
WATER & SEWER SERVICE**
GEORGETOWN, KENTUCKY

LIST OF QUANTITIES



PROJECT NO.	09016
SHEET NO.	G-2
of 10	

ITEM CODE	ITEM DESCRIPTION	UNIT	SHEET 1	SHEET 2	SHEET 3	SHEET 4	TOTAL
03381	2-inch Water Main, PVC Pipe, Class 200 SDR 21 with all appurtenances and fittings	L.F.	160				160
03382	3-inch Water Main, PVC Pipe, Class 200 SDR 21 with all appurtenances and fittings	L.F.			80		80
01099	12-inch Water Main, Ductile Iron, Class 350 Pipe with all appurtenances and fittings	L.F.	1055	1605	1500	375	4535
20481EC	12-inch Ductile Iron, Class 350, Creek Crossing with all appurtenances and fittings	L.F.		50		90	140
03522	2-inch CI AWWA NRS Gate Valve and Valve Box, Complete in Place	EA.	1				1
03523	3-inch CI AWWA NRS Gate Valve and Valve Box, Complete in Place	EA.			1		1
03526	6-inch CI AWWA NRS Gate Valve and Valve Box, Complete in Place	EA.	1			1	2
03532	12-inch CI AWWA NRS Gate Valve and Valve Box, Complete in Place	EA.	1	1	2	1	5
20156EC	6-inch Hydrant Assembly	EA.	1		1	1	3
01063	6-inch Steel Casing Pipe Bored and Jacked	L.F.	105				105
01076	20-inch Steel Casing Pipe Bored and Jacked	L.F.	160	40	60	80	340
22082NN	2" Air Release Valve	EA.	1	1			2
03460	Connection to Existing Water Main	EA.	1		1	1	3
21179NO	Wet Tap Connection - 12" Tapping Sleeve and Valve	EA.	1			1	2
03438	Reconnect Existing Meter to New Water Main	EA.	2	1			3
23308EC	Set New Meter and Reconnect to New Water Main	EA.		1			1
23757EC	1" Curb Stop & Box	EA.	1				1
21701EN	1" Service Line	L.F.	200				200
24128EC	Orange Plastic Safety Fencing	L.F.	900				900

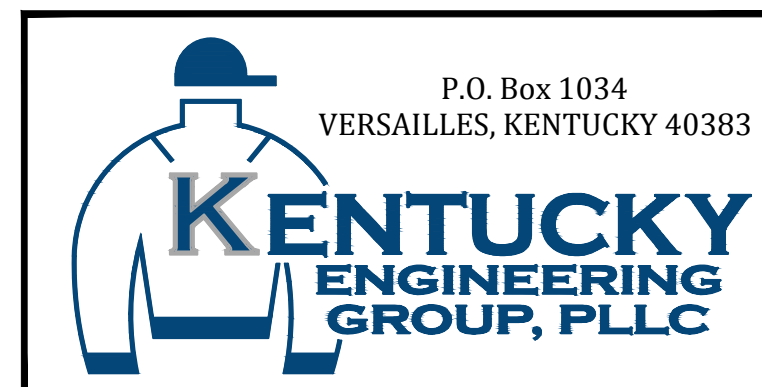
P:\PROJECTS\GMWSS\09016-US-460 WL Reloc\Drawings\DWG\09016-G02.dwg

IT IS A VIOLATION OF LAW FOR ANY PERSON TO ALTER THIS DRAWING WITHOUT WRITTEN PERMISSION FROM KENTUCKY ENGINEERING GROUP, PLLC AND ACTING UNDER THE DIRECTION OF A LICENSED ENGINEER.

THIS DRAWING WAS PREPARED AT THE SCALE INDICATED. INACCURACIES IN THE STATED SCALE MAY BE INTRODUCED WHEN DRAWINGS ARE REPRODUCED BY ANY MEANS. USE THE GRAPHIC SCALE BAR IN THE DRAWING OR TITLE BLOCK TO DETERMINE THE ACTUAL SCALE.

NO.	DATE	REVISIONS	BY

DATE:	DECEMBER, 2009
PROJECT MGR:	BKL
DRAWN BY:	CDS
CHECKED BY:	BKL
SCALE:	AS NOTED
2009 © Kentucky Engineering Group, PLLC	



US 460 WATERLINE RELOCATION
FOR
**GEORGETOWN MUNICIPAL
WATER & SEWER SERVICE**
GEORGETOWN, KENTUCKY

LIST OF QUANTITIES

PROJECT NO.
09016

SHEET NO.
G-2

of 10

CONTRACT ID: 111013
COUNTY: SCOTT
PROPOSAL: STPR 4601(030)

PAGE: 1
LETTING: 04/29/11
CALL NO: 104

LINE NO	ITEM	DESCRIPTION	APPROXIMATE QUANTITY	UNIT	UNIT PRICE	AMOUNT
SECTION 0001 ROADWAY						
0010	00003	CRUSHED STONE BASE	8,301.000	TON		
0020	00020	TRAFFIC BOUND BASE	240.000	TON		
0030	00078	CRUSHED AGGREGATE SIZE NO 2	4.000	TON		
0040	00100	ASPHALT SEAL AGGREGATE	40.000	TON		
0050	00212	CL2 ASPH BASE 1.00D PG64-22	6,013.000	TON		
0060	00291	EMULSIFIED ASPHALT RS-2	4.000	TON		
0070	00307	CL2 ASPH SURF 0.38B PG64-22	1,282.000	TON		
0080	00440	ENTRANCE PIPE-15 IN	56.000	LF		
0090	00443	ENTRANCE PIPE-24 IN	116.000	LF		
0100	00462	CULVERT PIPE-18 IN	69.000	LF		
0110	00463	CULVERT PIPE-21 IN	66.000	LF		
0120	00464	CULVERT PIPE-24 IN	105.000	LF		
0130	00473	CULVERT PIPE-66 IN	54.000	LF		
0140	00524	STORM SEWER PIPE-24 IN	84.000	LF		
0150	01000	PERFORATED PIPE-4 IN	240.000	LF		
0160	01010	NON-PERFORATED PIPE-4 IN	78.000	LF		
0170	01020	PERF PIPE HEADWALL TY 1-4 IN	3.000	EACH		
0180	01028	PERF PIPE HEADWALL TY 3-4 IN	1.000	EACH		
0190	01434	SLOPED BOX OUTLET TYPE 1-24 IN	1.000	EACH		
0200	01450	S & F BOX INLET-OUTLET-18 IN	1.000	EACH		

CONTRACT ID: 111013
COUNTY: SCOTT
PROPOSAL: STPR 4601(030)

PAGE: 2
LETTING: 04/29/11
CALL NO: 104

LINE NO	ITEM	DESCRIPTION	APPROXIMATE QUANTITY	UNIT	UNIT PRICE	AMOUNT
0210	01451	S & F BOX INLET-OUTLET-24 IN	1.000	EACH		
0220	01496	DROP BOX INLET TYPE 3	2.000	EACH		
0230	01497	DROP BOX INLET TYPE 3 MOD	1.000	EACH		
0240	01511	DROP BOX INLET TYPE 5D	1.000	EACH		
0250	01650	JUNCTION BOX	1.000	EACH		
0260	01880	BARRIER HEADER CURB	88.000	LF		
0270	01982	DELINEATOR FOR GUARDRAIL-WHITE	7.000	EACH		
0280	02014	BARRICADE-TYPE III	28.000	EACH		
0290	02084	JPC PAVEMENT-8 IN	573.000	SQYD		
0300	02091	REMOVE PAVEMENT	2,224.000	SQYD		
0310	02101	CEM CONC ENT PAVEMENT-8 IN	72.000	SQYD		
0320	02159	TEMP DITCH	2,022.000	LF		
0330	02200	ROADWAY EXCAVATION	103,628.000	CUYD		
0340	02203	STRUCTURE EXCAV-UNCLASSIFIED	251.000	CUYD		
0350	02231	STRUCTURE GRANULAR BACKFILL	44.000	CUYD		
0360	02242	WATER	900.000	MGAL		
0370	02273	FENCE-4 FT CHAIN LINK	260.000	LF		
0380	02351	GUARDRAIL-STEEL W BEAM-S FACE	2,200.000	LF		
0390	02360	GUARDRAIL TERMINAL SECTION NO 1	1.000	EACH		
0400	02363	GUARDRAIL CONNECTOR TO BRIDGE END TY A	2.000	EACH		
0410	02371	GUARDRAIL END TREATMENT TYPE 7	3.000	EACH		

CONTRACT ID: 111013
COUNTY: SCOTT
PROPOSAL: STPR 4601(030)

PAGE: 3
LETTING: 04/29/11
CALL NO: 104

LINE NO	ITEM	DESCRIPTION	APPROXIMATE QUANTITY	UNIT	UNIT PRICE	AMOUNT
0420	02381	REMOVE GUARDRAIL	1,609.000	LF		
0430	02391	GUARDRAIL END TREATMENT TYPE 4A	6.000	EACH		
0440	02397	TEMP GUARDRAIL	1,180.000	LF		
0450	02429	RIGHT-OF-WAY MONUMENT TYPE 1	36.000	EACH		
0460	02432	WITNESS POST	36.000	EACH		
0470	02483	CHANNEL LINING CLASS II	1,110.000	TON		
0480	02484	CHANNEL LINING CLASS III	766.000	TON		
0490	02545	CLEARING AND GRUBBING 16 ACRES	(1.00)	LS		
0500	02562	SIGNS	418.000	SQFT		
0510	02565	OBJECT MARKER TYPE 2	2.000	EACH		
0520	02600	FABRIC GEOTEXTILE TY IV FOR PIPE	497.000	SQYD	2.00	994.00
0530	02625	REMOVE HEADWALL	1.000	EACH		
0540	02650	MAINTAIN & CONTROL TRAFFIC	(1.00)	LS		
0550	02651	DIVERSIONS (BY-PASS DETOURS) #1	(1.00)	LS		
0560	02651	DIVERSIONS (BY-PASS DETOURS) #2	(1.00)	LS		
0570	02651	DIVERSIONS (BY-PASS DETOURS) #3	(1.00)	LS		
0580	02651	DIVERSIONS (BY-PASS DETOURS) BELVEDERE	(1.00)	LS		
0590	02651	DIVERSIONS (BY-PASS DETOURS) ROBINSON	(1.00)	LS		
0600	02671	PORTABLE CHANGEABLE MESSAGE SIGN	2.000	EACH		
0610	02690	SAFELoADING	63.000	CUYD		
0620	02701	TEMP SILT FENCE	2,022.000	LF		

CONTRACT ID: 111013
COUNTY: SCOTT
PROPOSAL: STPR 4601(030)

PAGE: 4
LETTING: 04/29/11
CALL NO: 104

LINE NO	ITEM	DESCRIPTION	APPROXIMATE QUANTITY	UNIT	UNIT PRICE	AMOUNT
0630	02703	SILT TRAP TYPE A	16.000	EACH		
0640	02704	SILT TRAP TYPE B	16.000	EACH		
0650	02705	SILT TRAP TYPE C	16.000	EACH		
0660	02706	CLEAN SILT TRAP TYPE A	48.000	EACH		
0670	02707	CLEAN SILT TRAP TYPE B	48.000	EACH		
0680	02708	CLEAN SILT TRAP TYPE C	48.000	EACH		
0690	02709	CLEAN TEMP SILT FENCE	2,022.000	LF		
0700	02726	STAKING	(1.00)	LS		
0710	02731	REMOVE STRUCTURE	(1.00)	LS		
0720	02775	ARROW PANEL	2.000	EACH		
0730	04797	CONDUIT-3 IN	40.000	LF		
0740	05950	EROSION CONTROL BLANKET	1,314.000	SQYD		
0750	05952	TEMP MULCH	77,395.000	SQYD		
0760	05953	TEMP SEEDING AND PROTECTION	77,395.000	SQYD		
0770	05966	TOPDRESSING FERTILIZER	4.000	TON		
0780	05985	SEEDING AND PROTECTION	77,395.000	SQYD		
0790	05989	SPECIAL SEEDING CROWN VETCH	30,000.000	SQYD		
0800	05997	TOPSOIL FURNISHED AND PLACED	29.000	CUYD		
0810	06510	PAVE STRIPING-TEMP PAINT-4 IN	26,000.000	LF		
0820	06514	PAVE STRIPING-PERM PAINT-4 IN	16,000.000	LF		
0830	06550	PAVE STRIPING-TEMP REM TAPE-W	800.000	LF		

CONTRACT ID: 111013
COUNTY: SCOTT
PROPOSAL: STPR 4601(030)

PAGE: 5
LETTING: 04/29/11
CALL NO: 104

LINE NO	ITEM	DESCRIPTION	APPROXIMATE QUANTITY	UNIT	UNIT PRICE	AMOUNT
0840	06551	PAVE STRIPING-TEMP REM TAPE-Y	800.000	LF		
0850	06567	PAVE MARKING-THERMO STOP BAR-12IN	30.000	LF		
0860	06588	PAVEMENT MARKER TY IVA-BY TEMP	80.000	EACH		
0870	06591	PAVEMENT MARKER TYPE V-BY	50.000	EACH		
0880	08100	CONCRETE-CLASS A	13.010	CUYD		
0890	08150	STEEL REINFORCEMENT	684.000	LB		
0900	10020NS	FUEL ADJUSTMENT	40,000.000	DOLL	1.00	40,000.00
0910	10030NS	ASPHALT ADJUSTMENT	60,000.000	DOLL	1.00	60,000.00
0920	20022ES724	ALLEGHANY VIBURNUM	28.000	EACH		
0930	20063EN9T	DRY-LAID ROCK FENCE	1,233.000	LF		
0940	21779EN	TREE PROTECTION FENCING	300.000	LF		
0950	23131ER701	PIPELINE VIDEO INSPECTION	189.000	LF		
SECTION 0002		BRIDGE-CULVERT				
0960	08002	STRUCTURE EXCAV-SOLID ROCK	763.000	CUYD		
0970	08003	FOUNDATION PREPARATION	(1.00)	LS		
0980	08100	CONCRETE-CLASS A	380.400	CUYD		
0990	08150	STEEL REINFORCEMENT	44,486.000	LB		
SECTION 0003		WATERLINE				
1000	01063	STEEL ENCASEMENT PIPE-6 IN BORE AND JACK	105.000	LF		
1010	01076	STEEL ENCASEMENT PIPE-20 IN BORE AND JACK	340.000	LF		
1020	01099	DUCTILE IRON PIPE-12 IN (REVISED: 4-20-11)	4,535.000	LF		

CONTRACT ID: 111013
COUNTY: SCOTT
PROPOSAL: STPR 4601(030)

PAGE: 6
LETTING: 04/29/11
CALL NO: 104

LINE NO	ITEM	DESCRIPTION	APPROXIMATE QUANTITY	UNIT	UNIT PRICE	AMOUNT
1030	03381	PVC PIPE-2 IN	160.000	LF		
1040	03382	PVC PIPE-3 IN	80.000	LF		
1050	03438	RECONNECT TO MAIN	3.000	EACH		
1060	03460	TIE-IN TO WATER LINE	3.000	EACH		
1070	03522	GATE VALVE-2 IN	1.000	EACH		
1080	03523	GATE VALVE-3 IN	1.000	EACH		
1090	03526	GATE VALVE-6 IN	2.000	EACH		
1100	03532	GATE VALVE-12 IN	5.000	EACH		
1110	20156EC	FIRE HYDRANT ASSEMBLY 6 IN	3.000	EACH		
1120	20481EC	CREEK CROSSING 12 IN -DIP;(REVISED: 4-20-11)	140.000	LF		
1130	21179ND	TAPPING SLEEVE & VALVE 12 X 12	2.000	EACH		
1140	21701EN	POLYETHYLENE PIPE-1 IN	200.000	LF		
1150	22082NN	AIR RELEASE VALVE ASSEMBLY	2.000	EACH		
1160	23308EC	WATER METER WITH BOX	1.000	EACH		
1170	23757EC	CURB STOP AND BOX-1 IN	1.000	EACH		
1180	24128EC	PLASTIC CONSTRUCTION/STAFETY FENCING (ADDED: 4-20-11)	900.000	LF		
SECTION 0004 MOB AND DEMOB						
1190	02568	MOBILIZATION (NO MORE THAN 5%)		LUMP		
1200	02569	DEMOBILIZATION (AT LEAST 1.5%)		LUMP		
		TOTAL BID				